

**WE  
VACUUM  
EVERYTHING**

**Ruwac**  
Industriesauger

# CONTENTS

COMPANY	3
PRODUCTS – OVERVIEW	4–5
DRY MEDIA	
■ Industrial vacuum cleaners / single-phase drive	6–7
■ Industrial vacuum cleaners / three-phase drive	8–9
■ Industrial vacuum cleaners / three-phase direct drive / pneumatic drive	10–11
■ Pre-separators	12–13
WET MEDIA	
■ Water vacuum systems / three-phase and single-phase drive	14–15
■ Chip extractors / three-phase and single-phase drive	16–17
■ Pre-separators	18–19
DRY MEDIA – combustible / potentially explosive –	
Industrial vacuum cleaners:	
■ Single-phase drive / dust explosion hazard areas	20–21
■ Three-phase drive / dust explosion hazard areas	22–23
■ Three-phase direct drive / dust explosion hazard areas	24–25
■ Three-phase drive / gas explosion hazard areas	26–27
■ Compressed air drive / dust and gas explosion hazard areas	28–29
■ Separators without drives / dust and gas explosion hazard areas	28–29
■ Dust extractors / three-phase drive / gas explosion hazard areas	30–31
■ Wet separators / three-phase and single-phase ac drive / dust explosion hazard areas	32–33
MODULAR SYSTEM	34–37
ACCESSORIES	38–39



# COMPANY

## FACTS

- Founded 1976
- Melle / Osnabrück
- approx. 5,500 m<sup>2</sup> production area
- approx. 160 employees
- approx. 30 sales representatives
- approx. 20 service technicians
- made in germany
- approx. 20 distributors worldwide
- 4 associate companies with 3 productions

■ Distribution / Service in Germany



■ Sales representatives

■ Service technicians

■ Worldwide



# DRY MEDIA

## Industrial vacuum cleaners, single-phase drive

- Type R01 A
- Type WS 3
- Type WS 100
- Type WS 200

(See pages 6 – 7)



## Industrial vacuum cleaners, three-phase drive

- Type R01 R
- Type DS 2
- Type DS 3
- Type DS 4

(See pages 8 – 9)



## Industrial vacuum cleaners, three-phase direct drive

- Type R01 S
- Type DAV-SB
- Type DA 5

## Pneumatic drive

- Type R01 P

(See pages 10 – 11)



## Pre-separators

- Pre-separator bin
- Disposal systems
- Silos and cyclones
- Pre-filter cells

(See pages 12 – 13)



# WET MEDIA

## Water vacuum cleaners Three-phase drive Single-phase drive

- Type WSP 2000

(See pages 14 – 15)



## Chip extractors Three-phase drive Single-phase drive

- Type SPS 35
- Type SPS 250

(See pages 16 – 17)



## Pre-separators

- Pre-separator bin
- Pre-separator lid

(See pages 18 – 19)



# DRY MEDIA

– combustible / potentially explosive –



Industrial vacuum cleaners  
single-phase drive  
dust explosion hazard areas

- Type R01 A
- Type WS 200

(See pages 20 – 21)



Industrial vacuum cleaners  
pneumatic drive  
dust and gas explosion hazard areas

- Type R01 P

(See pages 28 – 29)



Industrial vacuum cleaners  
three-phase drive  
dust explosion hazard areas

- Type R01 R
- Type DS 2
- Type DS 3
- Type DS 4
- Type R01 R with spark trap

(See pages 22 – 23)



Separators without drive  
dust and gas explosion hazard areas

- Pre-separator systems
- Type NA 250

(See pages 28 – 29)



Industrial vacuum cleaners  
three-phase direct drive  
dust explosion hazard areas

- Type R01 S
- Type DA 5
- Type SPS 250 - DA30

(See pages 24 – 25)



Dust extractors  
three-phase drive  
dust and gas explosion hazard areas

- Type DS 6 / Bag filter
- Type DS 6 / Cartridge filter

(See pages 30 – 31)



Industrial vacuum cleaners  
three-phase direct drive  
gas explosion hazard areas

- Type R01 R
- Type DS 2

(See pages 26 – 27)



Wet separators  
three-phase drive  
dust explosion hazard areas

- Type NA 35

Single-phase drive for  
vacuuming reactive  
materials

- Type NA 7

(See pages 32 – 33)



# DRY MEDIA

## Industrial vacuum cleaners / single-phase drive

- Type R01 A
- Type WS 3
- Type WS 100
- Type WS 200



R01 A, dust class L



WS 200, dust class H



R01 A, dust class L



WS 3320, dust class M



### Technical data

- Motor power: 1.0 to 3.6 kW
- Voltage: 230 Volt
- Vacuum: -185 to -230 mbar
- Air flow rate: 190 to 460 m<sup>3</sup>/h
- Dust class: L, M, H

Dust-Ex-version see pages 20– 21

# DRY MEDIA

## Industrial vacuum cleaners / three-phase drive

- Type R01 R
- Type DS 2
- Type DS 3
- Type DS 4



R01 R, dust class L



DS 3, dust class M



DS 2520, dust class H



DS 4150, dust class L





## Technical data

- Motor power: 2.2 to 15 kW
- Voltage: 400 Volt
- Vacuum: -125 to -350 mbar
- Air flow rate: 270 to 980 m<sup>3</sup>/h
- Dust class: L, M, H

Dust-Ex-version see pages 22 – 23

Gas-Ex-version (only type R01 R and DS 2) see pages 26 – 27

# DRY MEDIA

## Industrial vacuum cleaners / three-phase direct drive

- Type R01 S
- Type DA 5
- Type DAV-SB



R01 S, dust class L

## Industrial vacuum cleaners / pneumatic drive

- Type R01 P



DAV-SB, dust class M



DA 5150, dust class M, with drum tipper



R01 S, dust class M



## Technical data

- Motor power: 1.1 to 15 kW
- Voltage: 230 / 400 Volt
- Vacuum: -145 to -400 mbar
- Air flow rate: 200 to 1,040 m<sup>3</sup>/h
- Dust class: L, M, H

Dust-Ex-version (R01 S) see pages 24 – 25

Dust- and gas-Ex-version (R01 P) see pages 28 – 29

# DRY MEDIA

## Pre-separators

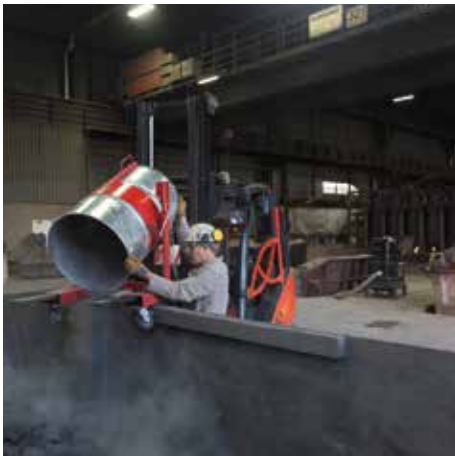
- Pre-separator bin
- Disposal systems
- Silos and cyclones
- Pre-filter cells



R01 A with pre-separator bin, 110 litres



Pre-separator bin (200 litres) with trolley



Pre-separator bin (200 litres) with trolley



Cyclone on pre-separator with R01 R



Individual versions according  
to customer requirements.

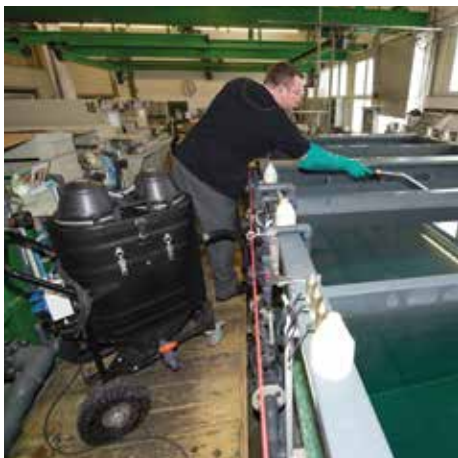
# WET MEDIA

Water vacuum systems / three-phase and single-phase drive

■ Type WSP 2000



WSP 2000, 45 litre capacity



WSP 2000, 85 litre capacity



WSP 2000, 100 litre capacity



### Technical data

- Motor power: 1.2 to 4.0 kW
- Voltage: 230 / 400 Volt
- Vacuum: -206 to -230 mbar
- Air flow rate: 174 to 410 m<sup>3</sup>/h

# WET MEDIA

## Chip extractors / three-phase and single-phase drive

- Type SPS 35
- Type SPS 250 - W
- Type SPS 250 - D



SPS 250, W24 (single-phase)



SPS 250, D40 (three-phase)



SPS 35, W12 (single-phase)



SPS 35, W12 (single-phase)





### Technical data

- Motor power: 1.2 to 7.5 kW
- Voltage: 230 / 400 Volt
- Vacuum: -210 to -330 mbar
- Air flow rate: 180 to 490 m<sup>3</sup>/h
- Capacity: 35 to 150 litre

Dust-Ex-version (SPS 250) see pages 24 – 25

# WET MEDIA

## Pre-separators

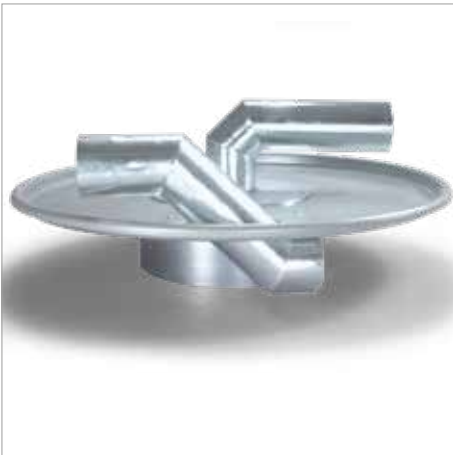
- Pre-separator bin
- Pre-separator lid



Pre-separator bin, 200 litre (sectional view)



Pre-separator lid with float switch



Pre-separator lid with demister mat



Pre-separator lid with float switch and demister mat



Individual versions according  
to customer requirements.

# DRY MEDIA

– combustible / potentially explosive –

Industrial vacuum cleaners / single-phase drive

Dust explosion hazard areas / zone 22

■ Type R01 A

■ Type WS 200



R01 A, dust class M



R01 A, dust class M



WS 200, dust class H



### Technical data

- Motor power: 1.0 to 3.6 kW
- Voltage: 230 Volt
- Vacuum: -185 to -230 mbar
- Air flow rate: 190 to 460 m<sup>3</sup>/h
- Dust class: L, M, H

# DRY MEDIA

– combustible / potentially explosive –

Industrial vacuum cleaners / three-phase drive

Dust explosion hazard areas / zone 21 and zone 22

■ Type R01 R

■ Type DS 2

■ Type DS 3

■ Type DS 4

■ Type R01 R022 with spark trap



R01 R022 with spark trap, dust class M



DS 2520, dust class M



R01 R, dust class M



DS 3, dust class M



### Technical data

- Motor power: 2.2 to 15 kW
- Voltage: 400 Volt
- Vacuum: -125 to -350 mbar
- Air flow rate: 270 to 980 m<sup>3</sup>/h
- Dust class: L, M, H

Zone 21 only type R01 R and DS 2

# DRY MEDIA

– combustible / potentially explosive –

Industrial vacuum cleaners / three-phase direct drive

Dust explosion hazard areas / zone 22

- Type R01 S
- Type DA 5
- Type SPS 250-DA 30



R01 S, dust class H



SPS 250-DA 30, dust class M



DA 5150, dust class M





### Technical data

- Motor power: 1.1 to 15 kW
- Voltage: 230 / 400 Volt
- Vacuum: -145 to -400 mbar
- Air flow rate: 200 to 1,040 m<sup>3</sup>/h
- Dust class: L, M, H

# DRY MEDIA

– combustible / potentially explosive –

Industrial vacuum cleaners / three-phase drive

Gas explosion hazard areas / zone 1, zone 2, zone 21 and zone 22

■ Type R01 R

■ Type DS 2



R01 R, dust class H



R01 R, dust class M



DS 2520, dust class M



### Technical data

- |                  |                              |
|------------------|------------------------------|
| ■ Motor power:   | 2.5 to 7.5 kW                |
| ■ Voltage:       | 400 Volt                     |
| ■ Vacuum:        | -200 to -230 mbar            |
| ■ Air flow rate: | 300 to 820 m <sup>3</sup> /h |
| ■ Dust class:    | L, M, H                      |

# DRY MEDIA

– combustible / potentially explosive –

Dust and gas explosion hazard areas /  
zone 1, zone 2, zone 21 and zone 22

Industrial vacuum cleaners /  
pneumatic drive

■ Type R01 P



R01 P, dust class M

Separators without drive

■ Type NA 250

■ Pre-Separator systems



NA 250 with residual dust filter



R01 R, with silo, dust class M



Individual versions according to customer requirements.

# DRY MEDIA

– combustible / potentially explosive –

Dust extractors / three-phase drive

Dust and gas explosion hazard areas / zone 1, zone 2, zone 21 and zone 22

- Type DS 6 with bag filter
- Type DS 6 with cartridge filter



DS 65600 with cartridge filter, dust class M



DS 63000 with bag filter, dust class H



DS 64400 (tandem) with bag filter,  
dust class H



DS 64400 (tandem) with cartridge filter,  
dust class M



### Technical data

- Motor power: 1.5 to 4.0 kW
- Voltage: 400 Volt
- Vacuum: -23 to -45 mbar
- Air flow rate: 2,500 to 5,600 m<sup>3</sup>/h
- Dust class: M, H

# DRY MEDIA

– combustible / potentially explosive –

Wet separators / three-phase drive  
dust explosion hazard areas /  
zone 1, zone 2, zone 21 and zone 22

■ Type NA 35



NA 35 - D1

Wet separators / single-phase drive  
for vacuuming reactive materials

■ Type NA 7-11

■ Type NA 7-26



NA 7-11



NA 7-26





### Technical data

- Motor power: 1.1 to 4.0 kW
- Voltage: 230 /400 Volt
- Vacuum: -165 to -235 mbar
- Air flow rate: 130 to 350 m<sup>3</sup>/h

# MODULAR SYSTEM

- Series R01 -



R01 R



R01 A



R01 S



R01 P

### Noise suppression casing

---

### Drives

---

- Three-phase
- Three-phase direct
- Single-phase AC
- Pneumatic
- Battery
- Petrol engine

### Filters

---

- Activated carbon filter
- Residual dust filter, dust class H
- Pocket filter, dust class L/M
- Cell filter, dust class L/M
- Cartridge filter, dust class L/M

### Dedusting

---

- Manual
- Electrical
- Pneumatic

### Dust collector

---

- With dust collector

### Basis assembly

---

- With wheels of different sizes  
from 75 to 200 mm



# MODULAR SYSTEM

– Dust extractors DS6 –

Drive modules



Radial fan  
1.5 kW – 2.2 kW – 3.0 kW – 4.0 kW

Filter modules, optional



Residual dust filter,  
36 m<sup>2</sup>

Dedusting modules

manual



electric



pneumatic



Filter modules



Pocket filter  
3 m<sup>2</sup> – 10 m<sup>2</sup>

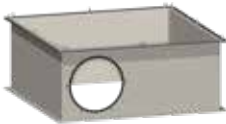


Pocket filter  
20 m<sup>2</sup>



Cartridge filter  
24 m<sup>2</sup>

Intake modules



Intake module  
200 m<sup>2</sup>



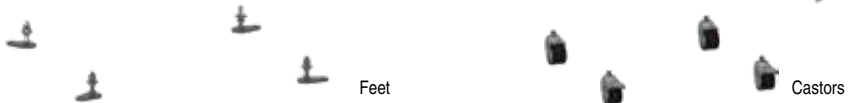
Intake module  
300 m<sup>2</sup>

Base modules



Dust bin stainless steel, 55 litre

Stand modules



Feet

Castors

# Accessories



Noise suppressor



Exhaust air diffuser

pneumatic



Cartridge filter  
48 m<sup>2</sup>



Polyethylene bag, 200 litre



Castors



Extractor arm



Extinguisher device for  
flammability ratings  
A, B, C or D



Spark trap



Disposal container  
50 litre

# SELECTION FROM THE RANGE OF ACCESSORIES





More accessories under  
[www.ruwac.de/en/products/accessories](http://www.ruwac.de/en/products/accessories)



**Ruwac**  
Industriesauger



**Ruwac**  
**Industriesauger GmbH**  
Westhoyeler Str. 25  
49328 Melle

+49 (0) 52 26 - 98 30-0  
[www.ruwac.de](http://www.ruwac.de)  
[ruwac@ruwac.de](mailto:ruwac@ruwac.de)

14-020-002-04.2021